



PIGMENTED QUARTZ FOR RESIN FLOORING

**INCRETE CHROMA-QUARTZ**



**APPLICATIONS**

- Restaurants
- Kitchens/food prep areas
- Retail/commercial outlets
- Garages/auto body
- Machine shops
- Locker rooms/showers
- Restrooms
- Manufacturing plants
- Schools
- Medical offices
- Hospitals

**PRODUCT SUPPORT**

- Specification assistance
- CAD details
- Design consultation
- Color selection assistance
- R&D laboratories
- Applied samples
- Engineered-systems approach

**INCRETE CHROMA-QUARTZ** is a blend of finely graded natural sand, binders, and iron oxide pigments. The result is a broadcast or trowel down seamless flooring system that offers a beautiful and durable non-slip surface. Depending upon the application, this aesthetically pleasing surface can have a positive footing or a smooth, high gloss finish. The brilliant array of colors can be used singly or in blended combinations to produce a vast palette of choices sure to match any decor or theme.

**INCRETE CHROMA-QUARTZ** is used in TUFFCOAT DBS and INCRETE QUARTZ EP High Performance Flooring systems. When used with INCRETE HIGH PERFORMANCE EPOXY or DURALTEX epoxies, INCRETE CHROMA-QUARTZ provides a floor that is also highly chemical resistant and very low maintenance.

**CUSTOMER SUPPORT**

- Technical support available for product selection, application questions.
- Distributor and contractor sourcing
- Trained regional field specialists
- Showroom and training facility
- 2-day seminars (available in Spanish). On-site distributor training and webinars by request are also available.



## PIGMENTED QUARTZ FOR RESIN FLOORING

# INCRETE CHROMA-QUARTZ

### COLOR SELECTION

Available in 16 standard colors and 5 specialty colors. Colors may be combined and mixed for unlimited color blend possibilities.



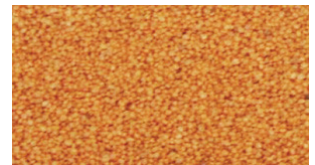
Chocolate



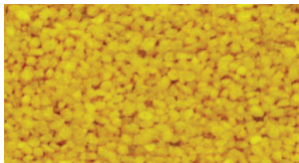
Tan



Buff



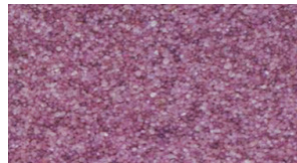
Peach



Yellow



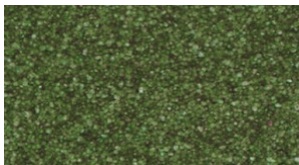
Red



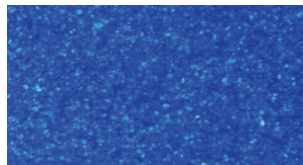
Plum



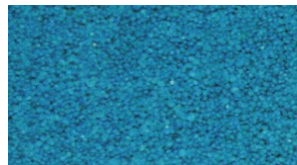
Cayman Green



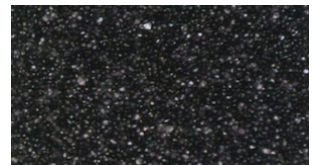
Green



Blue



Teal



Black



Medium Gray



Gray



Smoke



White

NOTE: This printed color chart is for reference purposes only. Euclid Chemical recommends choosing colors from actual test samples.